



XILINX

ALL PROGRAMMABLE™

ZC706 Power Bus Reprogramming

Contents

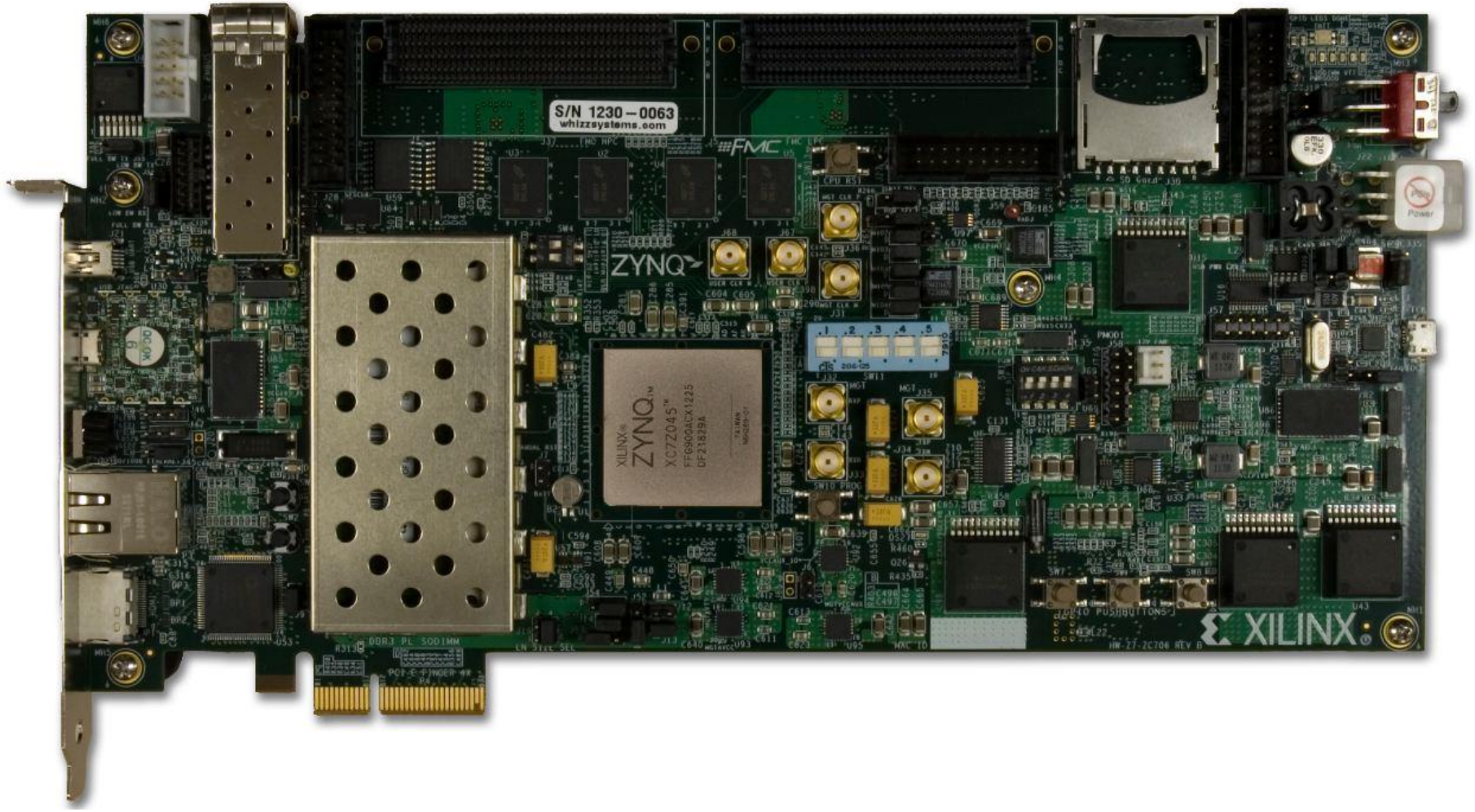
- **Caution!**
- **Xilinx ZC706 Board**
- **Hardware & Software Requirements**
- **Setup**
- **TI Fusion Digital Power Manufacturing Tool Tutorial**

Caution!

- The Texas Instruments software used in this presentation can adjust the power supply outputs on the ZC706
- If used improperly, it may seriously damage your ZC706
- Before making any adjustments not specifically covered in this presentation:
 - Understand the power requirements for Zynq-7000 Devices
 - Understand the consequences of the change you are making



Xilinx ZC706 Board



Hardware Requirements

➤ Texas Instruments USB Interface Adapter EVM

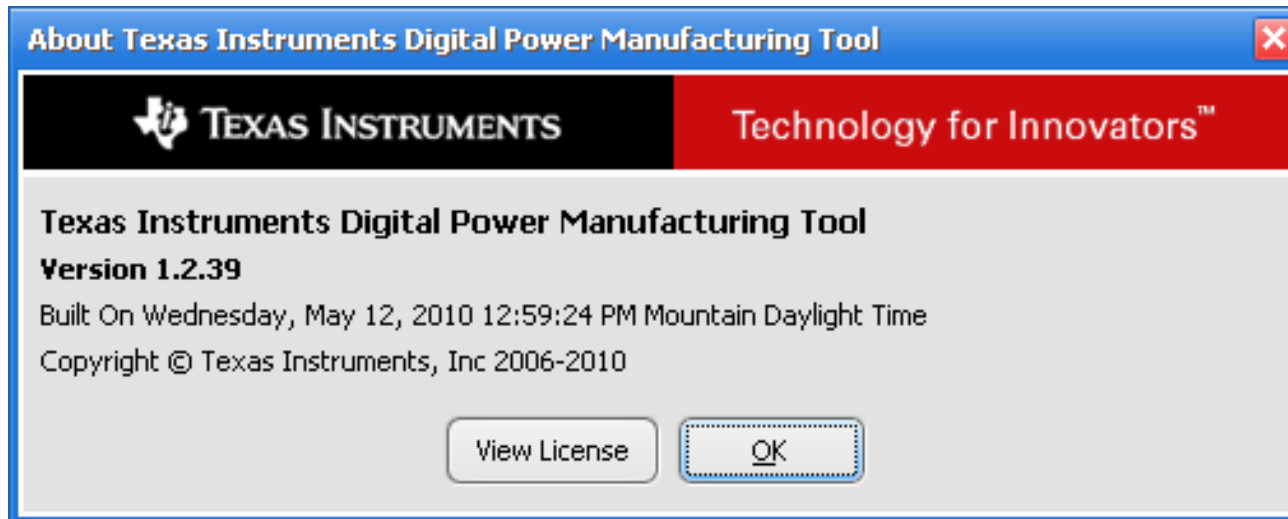
– TI Part Number: [USB-TO-GPIO](#)



Software Requirements

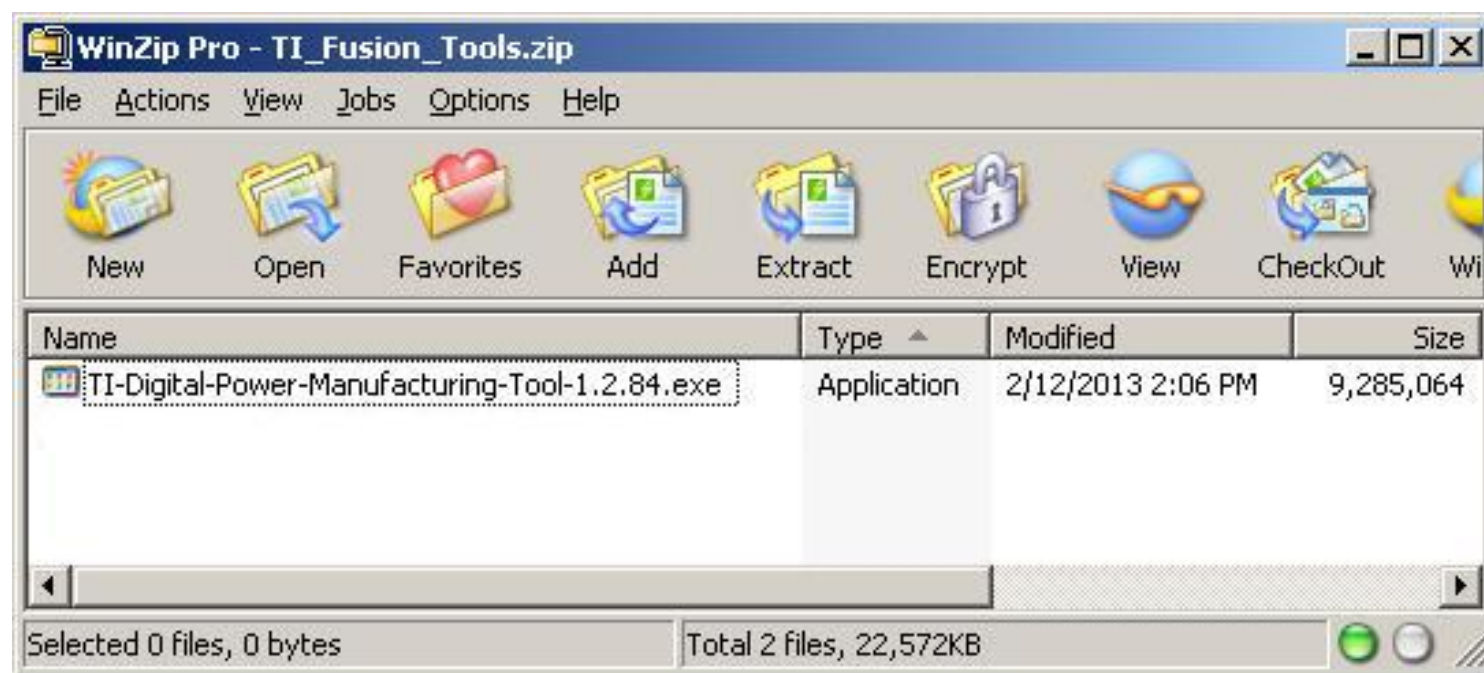
➤ Texas Instruments Power Software

- TI Part Number: [FUSION_MFR_GUI](#)
- Download: Latest Release at http://www.ti.com/tool/fusion_mfr_gui



Software Setup

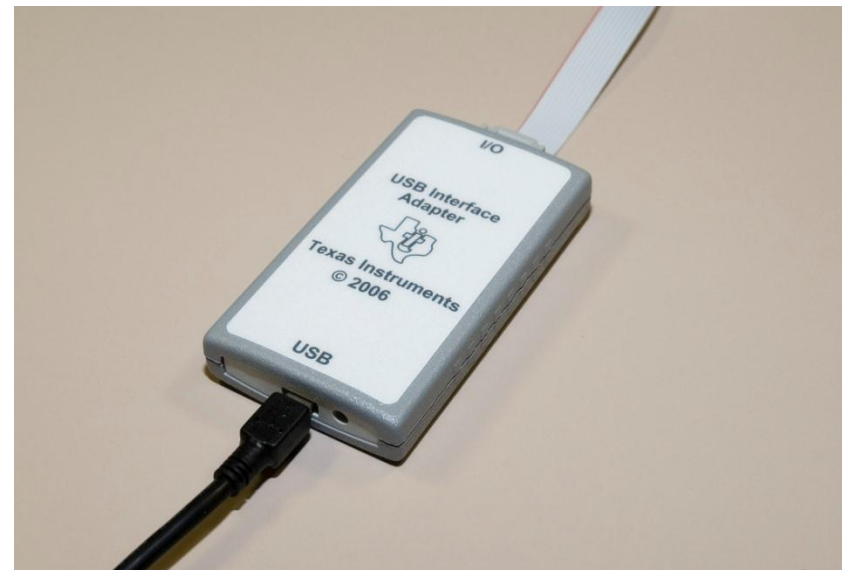
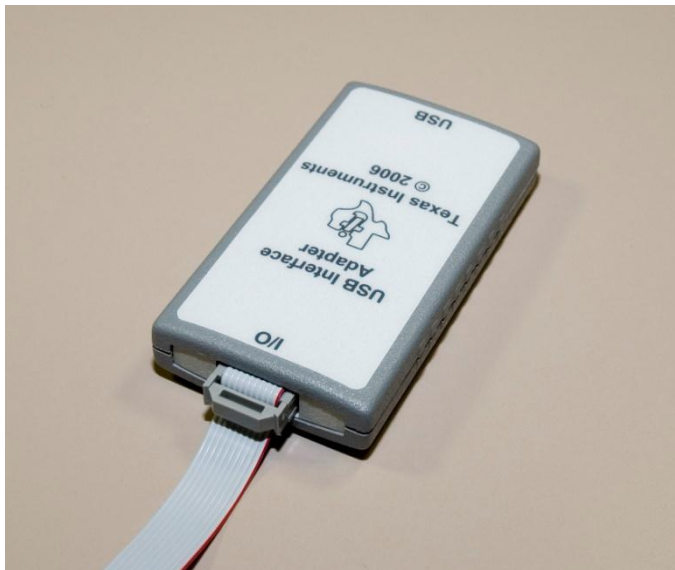
➤ Install the TI Fusion Digital Power Manufacturing Software



Connect TI USB Interface Adapter

➤ On the TI USB Adapter

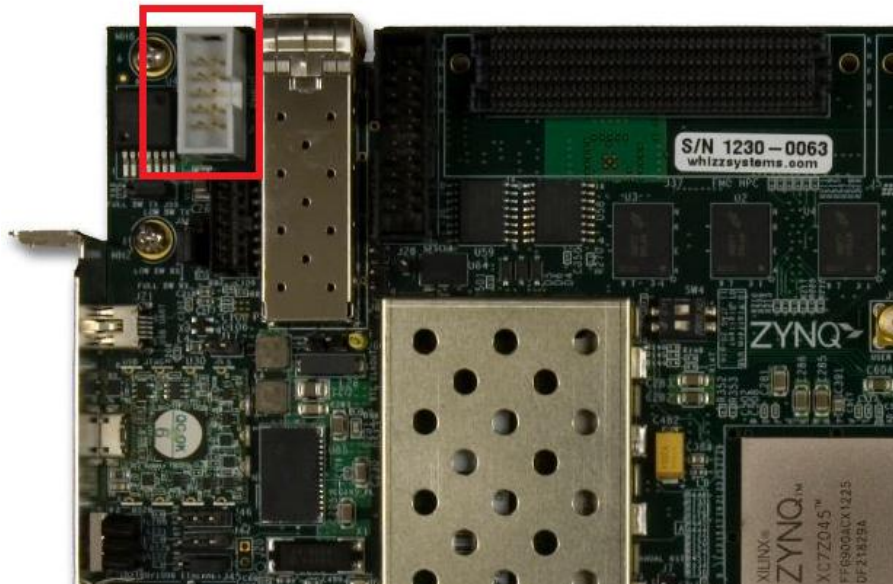
- Connect the Ribbon Cable
- Connect the USB Cable



Connect TI USB Interface Adapter (2)

➤ Connect the Ribbon Cable to the ZC706

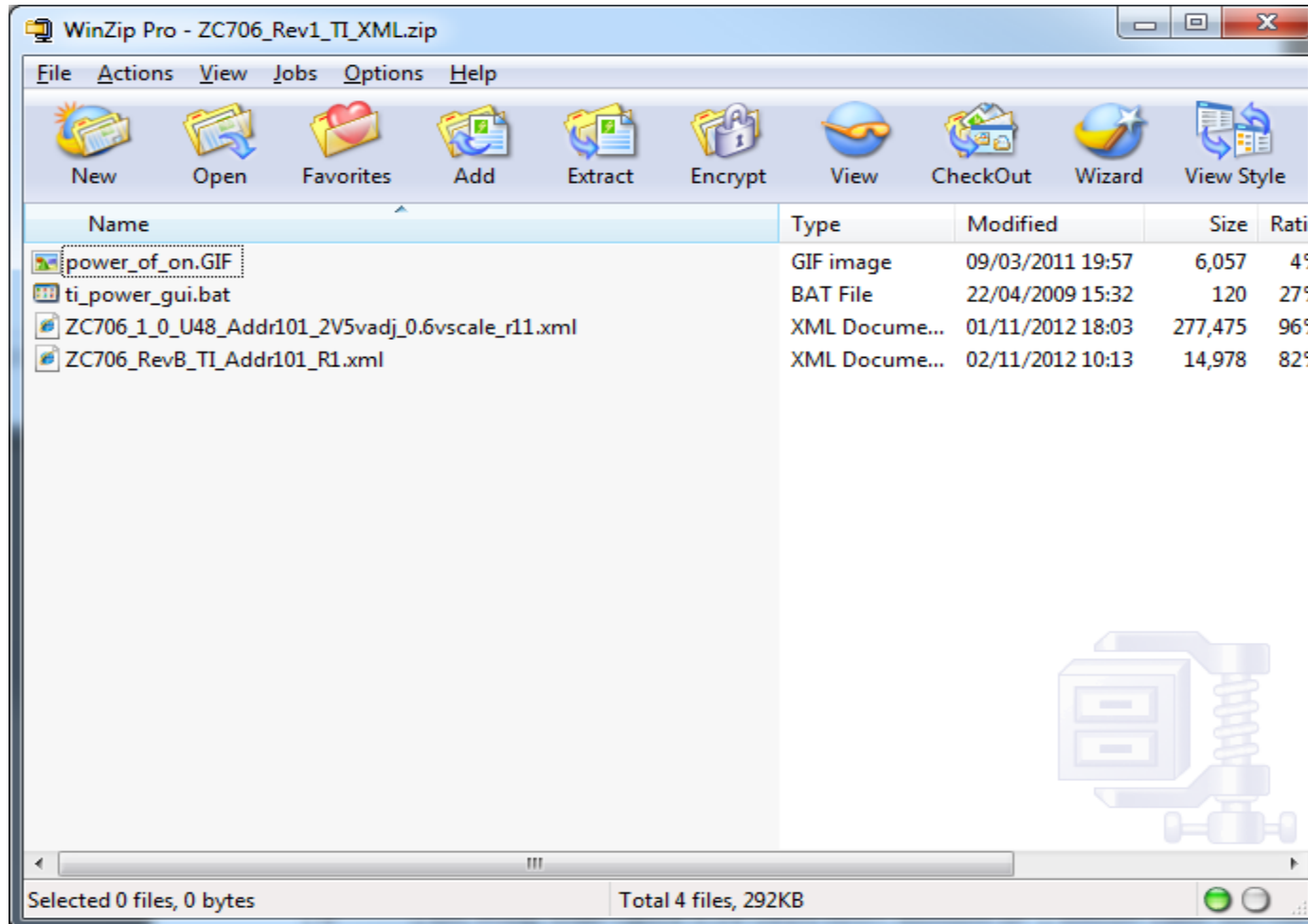
- Red Stripe towards pin 1



- Insert the “A” end of the USB cable into a PC USB port (do not use a docking station or USB hub port)
- Turn on the ZC706 board

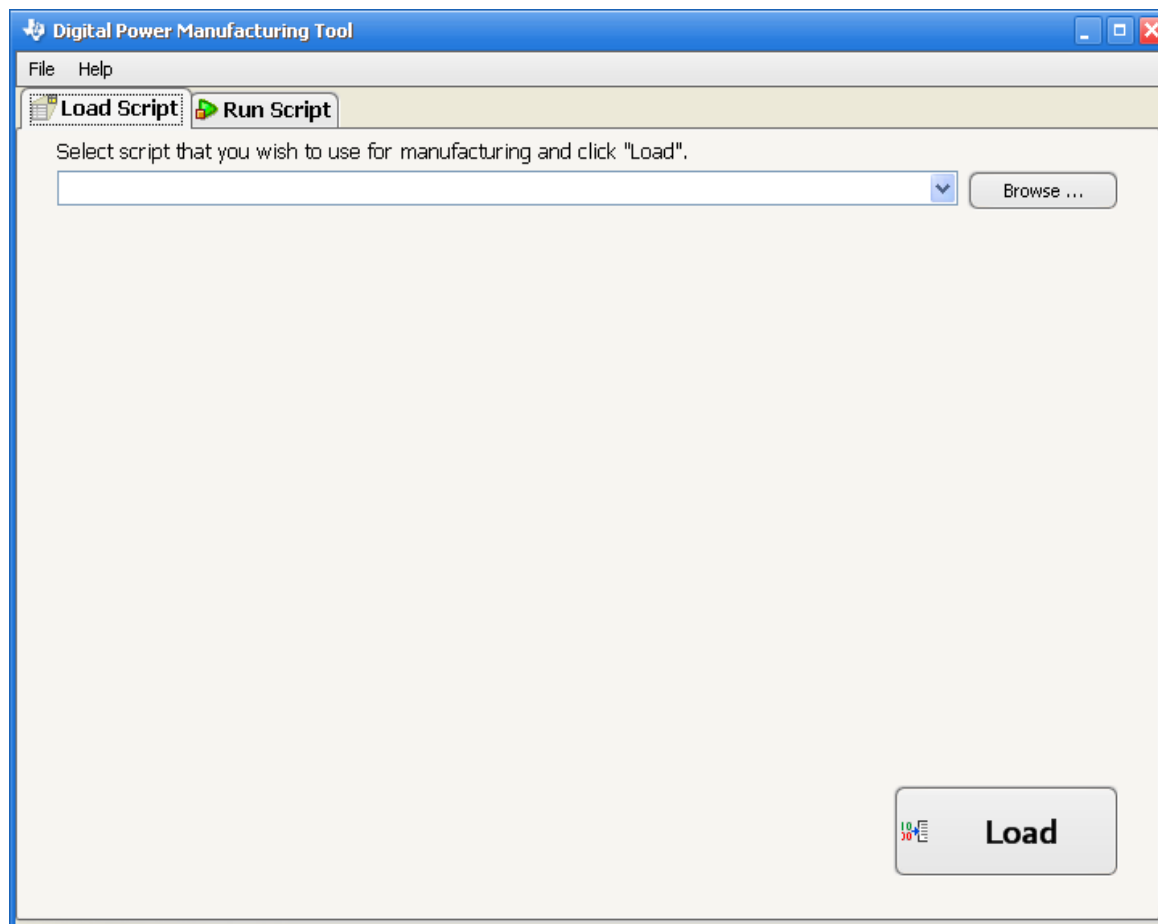
Restoring Power Levels

➤ Unzip included file: ZC706_Rev1_TI_XML.zip



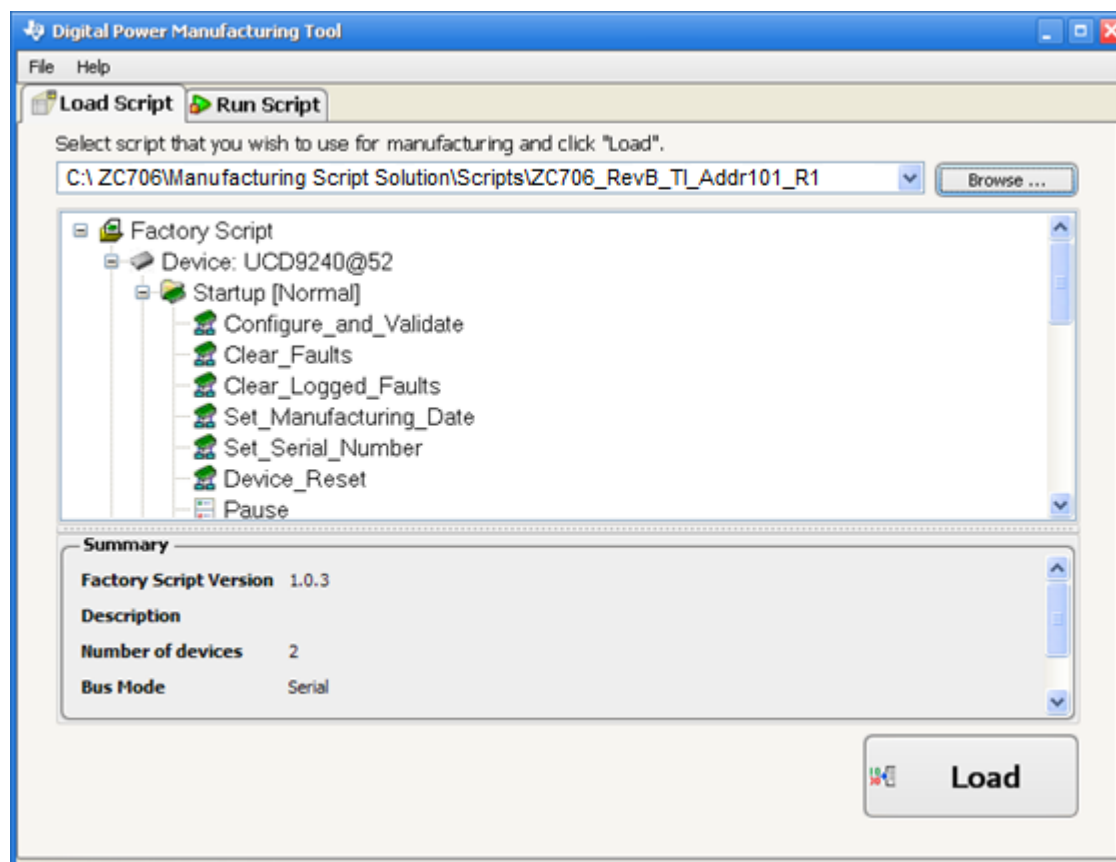
TI Fusion Digital Power Manufacturing Tool

➤ Open Manufacturer's GUI



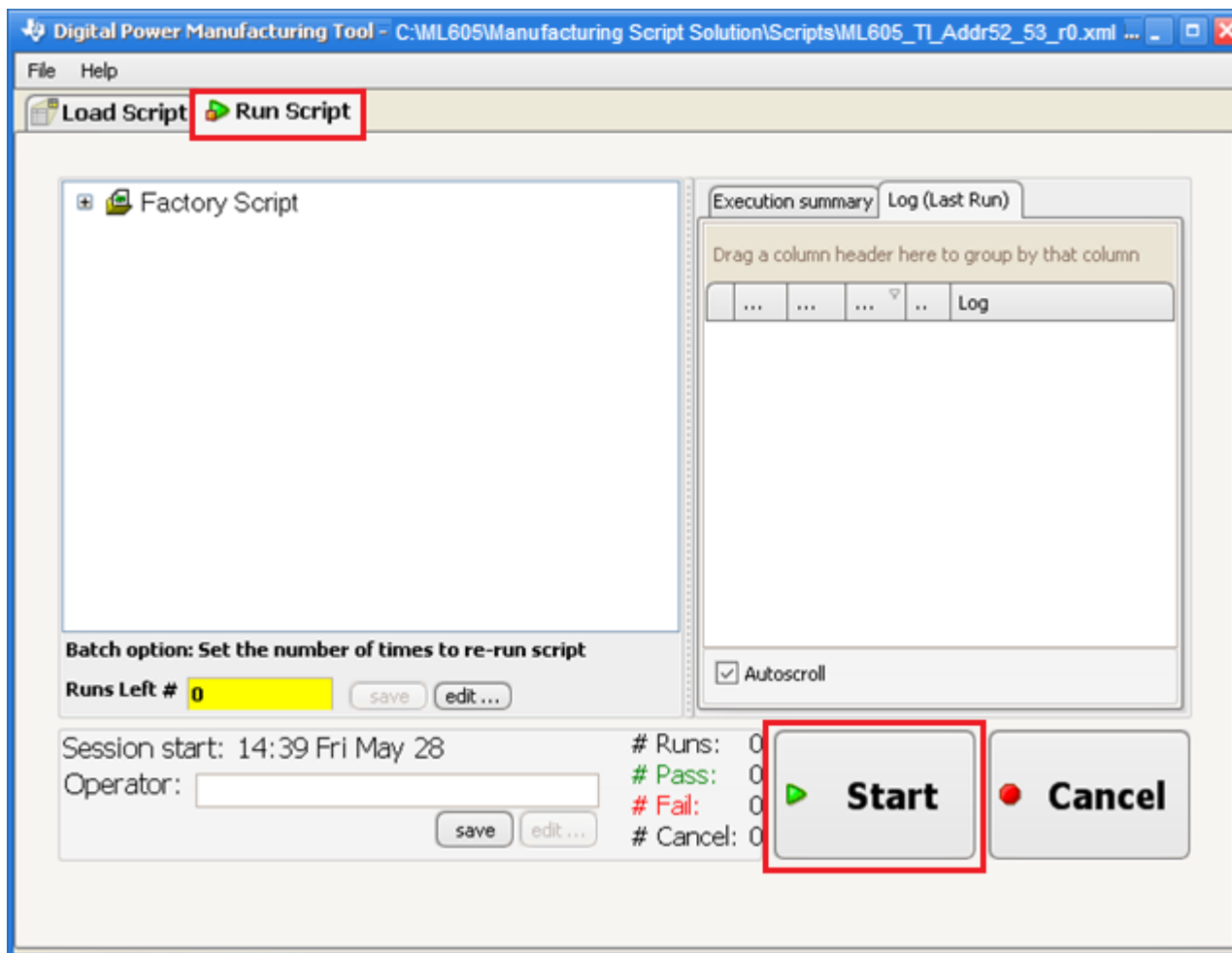
TI Fusion Digital Power Manufacturing Tool

- Load xml script from ZC706_Rev1_TI_XML.zip directory
 - Manufacturing Script Solution/Scripts/ZC706_RevB_TI_Addr101_R1.xml



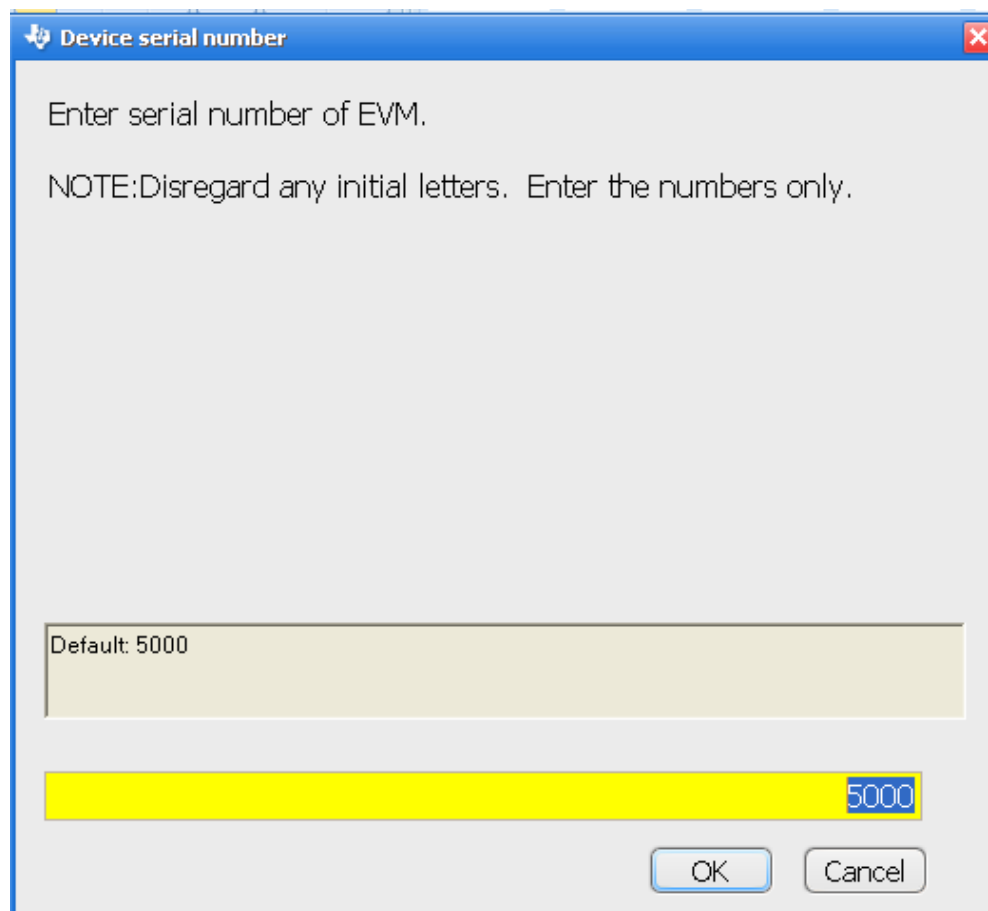
TI Fusion Digital Power Manufacturing Tool

➤ Click Run Script tab and then Start



TI Fusion Digital Power Manufacturing Tool

- Operator ID is irrelevant
- Click OK and wait for the board to finish programming
- Default Serial number can remain as is also



TI Fusion Digital Power Manufacturing Tool

➤ Finished!

Digital Power Manufacturing Tool - C:\ML605Manufacturing Script Solution\Scripts\ML605_TI_Addr52_53_r0.xml ...

File Help

Load Script Run Script

- ✓ Startup [Normal]
 - ✓ Configure_and_Validate
- ✓ Validation [Normal]
 - ✓ Clear_Faults
 - ✓ Clear_Logged_Faults
 - ✓ Set_Manufacturing_Date
 - ✓ Device_Reset
 - ✓ Pause
 - ✓ Validate_Vout_Device_All_Rails
- ✓ End [Normal]
 - ✓ Clear_Faults
 - ✓ Clear_Logged_Faults

Batch option: Set the number of times to re-run script

Runs Left # 0 [save] [edit ...]

Session start: 14:39 Fri May 28 # Runs: 5
Operator: Amanda # Pass: 1
Fail: 4
Cancel: 0

[Start] [Cancel]

Manufacturing Passed

Execution summary Log (Last Run)

Drag a column header here to group by that column

..	Log
1...	GE...	IN...	n...	UCD9240@53.End END attempt: 0/0 (3484.4642ms) PASS
1...	GE...	IN...	n...	UCD9240@53 END attempt: 0/0 (15172.2634ms) PASS
▶ 1...	GE...	IN...	n...	Factory Script END attempt: 0/0 (34532.134ms) PASS

Autoscroll