

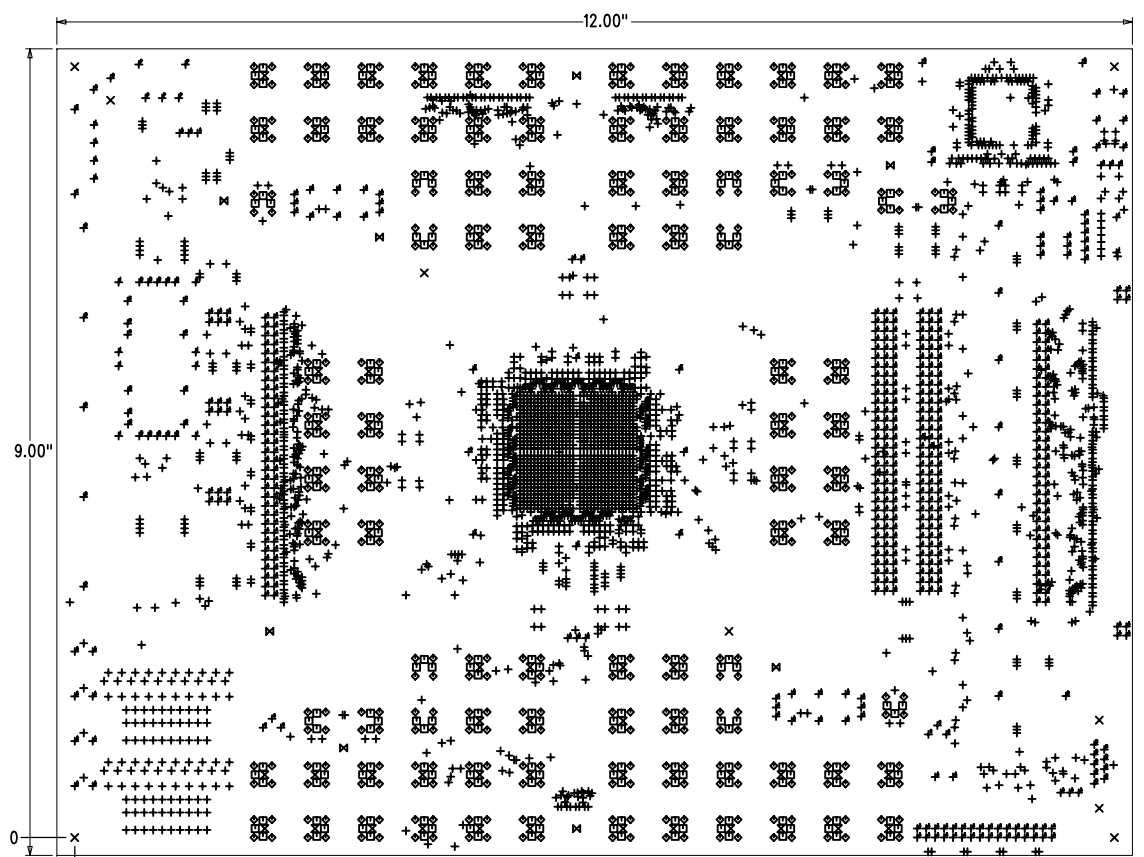
REV 01 THE INFORMATION IN THIS DRAWING IS THE SOLE PROPERTY OF THE XILINX CORPORATION. ANY REPRODUCTION IN PART OR WHOLE WITHOUT THE WRITTEN PERMISSION OF XILINX CORPORATION, IS PROHIBITED

REVISIONS			
REV	DESCRIPTION	DATE	APPROVED
01	INITIAL RELEASE	01-03-07	

DESCRIPTION  
PCB, ROHS COMPLIANT, ML423 FF1152

DWG NO.  
1280358

SIZE	QTY	SYM	PLATED	TOL
4.87	80	X	YES	+/-0.0
10	2727	+	YES	+/-0.0
11.81	160	+	YES	+/-0.0
15.75	288	+	YES	+/-0.0
31	6	+	YES	+/-0.0
37	449	+	YES	+/-0.0
39.37	2	+	YES	+/-0.0
45	19	+	YES	+/-0.0
52	2	+	NO	+/-0.0
55	10	+	YES	+/-0.0
59.84	4	+	YES	+/-0.0
62.99	384	+	YES	+/-0.0
65	8	+	YES	+/-0.0
67	2	+	NO	+/-0.0
73	5	+	YES	+/-0.0
87	2	+	NO	+/-0.0
90	6	+	YES	+/-0.0
90.55	2	+	YES	+/-0.0
95	8	+	YES	+/-0.0
100	2	+	NO	+/-0.0
105	2	+	YES	+/-0.0
125	9	X	YES	+/-0.0
250	14	+	YES	+/-0.0



COMPONENT VIEW

Layer	Type	Color	Dielectric	Copper Weight	Trace Width (MILS)	Drill	Trace Width (MILS)	Separation (MILS)	Drill	Comments
1	Top Side	L1	FR4	1/2 OZ	7.00	20+/-.04	6.50	8.00	100+/-.04	COPPER-FIL
2	CON PLANE 1	L2	FR4	1/2 OZ	1.00					
3	INNER TRACE 1	L3	FR4	1/2 OZ	6.35	150+/-.04	7.75	10.25	100+/-.04	COE(4000-13)
4	CON PLANE 2	L4	FR4	1/2 OZ						PRE-PRG(4000-13)
5	INNER TRACE 2	L5	FR4	1/2 OZ	5.50	150+/-.04	5.25	10.25	100+/-.04	COE(4000-13)
6	CON PLANE 3	L6	FR4	1/2 OZ						COE(4000-13)
7	TOP PLANE 1	L7	FR4	1/2 OZ						PRE-PRG(4000-13)
8	INNER TRACE 3	L8	FR4	1/2 OZ	5.00	150+/-.04				COE(4000-13)
9	INNER TRACE 4	L9	FR4	1/2 OZ	6.00	150+/-.04				PRE-PRG(4000-13)
10	CON PLANE 4	L10	FR4	1/2 OZ						COE(4000-13)
11	INNER TRACE 5	L11	FR4	1/2 OZ	6.00	150+/-.04	5.75	10.75	100+/-.04	PRE-PRG(4000-13)
12	CON PLANE 5	L12	FR4	1/2 OZ						COE(4000-13)
13	INNER TRACE 6	L13	FR4	1/2 OZ	7.00	150+/-.04	6.25	10.75	100+/-.04	PRE-PRG(4000-13)
14	CON PLANE 6	L14	FR4	1/2 OZ						PRE-PRG(4000-13)
15	INNER TRACE 7	L15	FR4	1/2 OZ	7.00	150+/-.04	6.50	8.00	100+/-.04	COPPER-FIL
16	BOTTOM SIDE	L16	FR4	1/2 OZ	7.00	150+/-.04	6.50	8.00	100+/-.04	COPPER-FIL

19. VENDOR MUST SUPPLY ROHS COMPLIANCY CERTIFICATION WITH BOARD.
  18. BOARD MUST BE ROHS COMPLIANT FOR Pb FREE ASSEMBLY.
  17. DIFFERENTIAL PAIRS IN TEST COUPON SHALL BE 3 INCHES LONG.
  16. BLIND VIA L1 TO L4 USE 4.87 MIL DRILL
  15. BLIND VIA L1 TO L4 USE 8 MIL DRILL
  14. PLATING : NICKEL/GOLD IMMERSION.
  13. IMPEDANCE TOLERANCE +/- 5%.
  12. ALL HOLES PLATED THROUGH, SIZES SPECIFIED ARE AFTER PLATING.
  11. HOLE TOLERANCE +/- .003, AFTER PLATING.
  10. REMOVE ALL SHARP EDGES AND BURRS.
  9. SOLDERMASK : LPI, COLOR=GREEN.
  8. RF - > 35-40ps EDGE RATE.
  7. MARK UL RECOGNIZED MANUFACTURER'S IDENTIFICATION LETTERS AND/OR SYMBOLS.
  6. USE ARTMASTER # 0531462
  5. BOARD THICKNESS = 0.110" +/- .010
  4. SILKSCREEN TOP AND BOTTOM; WHITE USING NON-CONDUCTIVE PAINT. (WARNOW CAT-L-INK PROCESS).
  3. MATERIAL = NELCO-4000-13 ASSUME ER 3.8
  2. FABRICATE IN ACCORDANCE WITH IPC-A-600F CLASS 2 LESS THAN 1.5% BOW AND TWIST. IPC-R-700 UL 796 AND UL 94 INDUSTRY STANDARD.
  1. BOARD IS SHOWN FROM COMPONENT SIDE.
- NOTES: UNLESS OTHERWISE SPECIFIED:

UNLESS OTHERWISE SPECIFIED ALL DIMENSIONS ARE IN INCHES TOLERANCES ARE: FRACTIONS .XX ± .02 DECIMALS .XXX ± .010 ANGLES ± 1°	CAD GENERATED DRAWING. DO NOT MANUALLY UPDATE		2100 LOGIC DRIVE SAN JOSE, CALIFORNIA 95124
	APPROVALS	DATE	
MATERIAL	CHECKED	S.S.	12-18-06
FINISH	RES ENG		
DO NOT SCALE DRAWING	MFG ENG		
	QUAL ENG		
	APPROVED		
TITLE		PCB, ROHS COMPLIANT, ML423 FF1152	
SIZE	FSCM NO.	DWG NO.	REV.
D		1280358	01
SCALE 1 : 1		SHEET 1 OF 1	